

Technical Datasheet

GSM DATALOGGER PLX 200 WM



GSM DATALOGGER PLX 200 WM

The highlights of GSM 200 WM Connect include wireless connection, high autonomy, and flexibility for different types of sensors. The value addition is completed by the large display, portability, and simple installation. Mobile device configuration and data downloading are also possible.

Temperature and humidity are accurately recorded by the WiFi data loggers at customizable intervals, and the measurement values are sent directly via wireless LAN to the Polwax Cloud.



Features

- **Large-scale facility monitoring with the current Wi-Fi infrastructure**
- **Downloading data through USB**
- **Wi-Fi data communication**
- **3.5" Touch Screen Display**
- **High speed Sampling**
- **Easy to Use**

Security Features

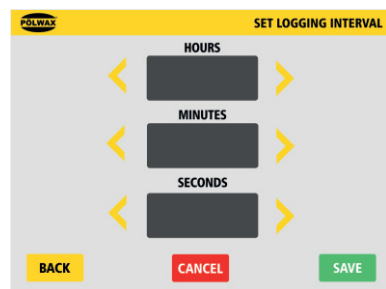
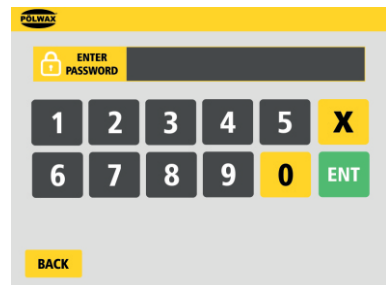
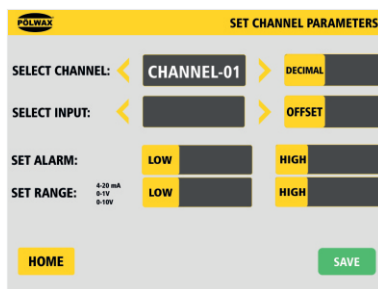
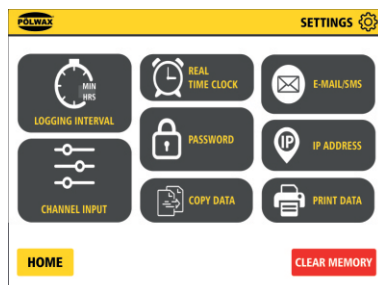
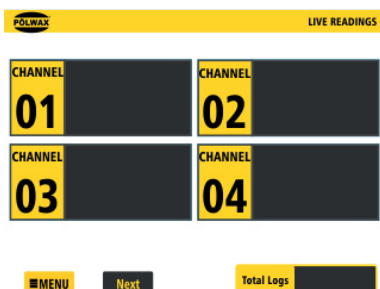
The configuration of the recorder and the integrity of the stored data are protected by a number of technical and physical security measures found in the PLX 200 WM. These features ensure that the PLX 100 WM complies with the requirements of 21 CFR Part 11.

- There is a door lock option.
- When the recorder is locked, the configuration can be password-protected to prevent unauthorised access to the SD card. Up to 12 users may be configured, each with unique access levels and passwords.
- To adhere to regulatory body norms, a recorder's internal security switch can be used to lock the configuration mode.
- All process data preserved to the SD card is always guaranteed to be secure. Then, this switch can be sealed to offer palpable evidence of the reliability

Configuration and data downloading CLOUD PORTALS

application straight to cloud gateways, such as Polwax Cloud This platform is IoT-ready. enables storing and presenting factors such as temperature, pressure, humidity of any kind monitored, varying, and by PLX 200 WMConnect taken down.





User Friendly UI

Technical Details

Channels	1 / 2 / 4
Inputs	Universal / RTD pt100 / Thermocouple / 4-20mA / 0-10V / Customize
Display	3.5" Color Touch Screen
Ethernet Communications	Webserver / FTP / email / Modbus TCP
Password Protection	Access to conguration is allowed only after the user has entered a password
Language	English
Display Color	TFT
Filename	Name tag, prexed with date/time
Thermocouple Types	B, E, J, K, L, N, R, S, T
Resistance Thermometer	Pt100
Digital Filter	Programmable 0 to 60s
Mounting	Field / Panel
Display Type	Color
Communications	Ethernet / RS485 Modbus / 2x Digital / Wi-Fi / GSM
Power Supply	24V DC (Adaptor)
Operating Temperature	-10 to 50 °C
Storage Temperature	-40 to +70 °C
Data Monitoring Software	POLWAX_View10.4 (Suitable for Win10 / Win10Pro)
Report Format	.PDF / .csv / .xlsx
Cloud Dashboard	Webbase*

* Suitable for any third party Sensors / Transmitters



POLWAX Group has got an experienced, highly-qualified project team conducting extensive R&D operations. Owing to that, goods holding the POLWAX brand feature customer-tailored flexibility and meet requirements of various industries.

Polwax International Co.

A12/45, Sector-2, Bharti Vidyapeeth Marg,
CBD Belapur, Navi Mumbai - 400615
Maharashtra, India.
Phone : +91 88579 90231
Email : info@polwax.in

